

POLE BUILDINGS

Quality Built • Sturdy • Economical



(P100) 30' x 32' x 10' – 960 Sq. Ft.

- 2 – 9' x 8' Carriage Style Garage Doors
- 1 – 36" 9-Lite Entry Door
- 12" Eave & Gable Overhangs
- 3' Wainscoting
- 36" Louvered Cupola
- 2 – 36" x 40" Windows
- 4" Cement Floor
- Light Stone Siding
- Blue Trim
- Copper Roof

Base Price \$14,822.50 • With Options \$25,442.96



Fully Licensed and Insured



No Sub-Crews

For Better Quality Control & Customer Service



Free Blueprints



10 Yr Top to Bottom Warranty



1901 Luxemburg Rd • Lykens PA 17048
info@rockymtnsheds.com

717-365-3796
www.rockymtnsheds.com



A birds-eye view of our manufacturing plant located at the base of the Mahantago Mountain in Lykens, PA.

Contents

2-Car Garages	3
2-3-4 Car Garages.....	4
Garages With Porches	5
2-Story Garages	6-7
Agricultural Buildings.....	8-9
Commercial Buildings	10
Floor Plans.....	11
Color Choices	12
Post Options	13
Pricing & Interior Options	14
Pole Building Options	15
High-Quality Construction	16

About Us

We broke ground in the summer of 2004. Starting from scratch as pioneers, we cleared trees and encountered extreme rocky terrain. Massive boulders were uncovered, and then used for landscaping and rock retaining walls. Hence the name ROCKY MOUNTAIN STRUCTURES was born.

We have been blessed with exceptional employees, who helped build a raving customer base. We have experienced steady growth, and expanded our facility three times in a down economy. All the glory to our Creator and Provider. With God, nothing is impossible.

Never underestimate the power of high quality workmanship and 100% customer satisfaction.

Rocky Mountain Structures manufactures 400–500 portable sheds, garages and cabins per year, delivered throughout Pennsylvania. A combined total of 150 sheds and garages are on display 24/7 at 8 locations.

In 2009 we expanded our service to include pole buildings and larger stick-built garages constructed on site.

Our Mission

Our foremost goal is to produce excellent products and services that will meet or exceed our customers' expectations. Our team strives to bring glory to God through superior service that shows honesty and integrity to all we serve. We are committed to a long-term relationship with our customers.

FINANCING AVAILABLE

Up to \$15,000

65 Months at 9.99% APR

Actual APR is based upon credit approval

Example: Finance

\$5,000 for 65 Months	\$100 per month
\$10,000 for 65 Months	\$200 per month
\$15,000 for 65 months	\$300 per month

Easy/Fast
Credit
Application
Online



For a Fast, NO Obligation Credit Check go to: www.rockymtnsheds.com – Click “Financing with Wells Fargo”

2 Car Garages



(P101) 30' x 40' x 10' – 1,200 Sq. Ft.

- 2 – 9' x 9' Insulated Garage Doors
- 1 – 36" 9-Lite Entry Door (Inswing)
- 12" Eave & Gable overhangs
- 2 – 36"x40' Windows
- Double Bubble (Condensation barrier)
- Green Posts
- 4" Cement Floor with 4' x 30' Apron
- Ash Grey Siding • Charcoal Trim & Blue Roof

Base Price \$15,812.50 • With Options \$29,428.30

(P102) 30' x 32' x 10" – 960 Sq. Ft.

- 2 – 9' x 8' Brown Garage Doors
- 1 – 36" 9-Lite Entry Door (Inswing)
- 2 – 36" x 40" Windows
- 12" Eave & Gable Overhangs
- 4" Cement Floor
- Clay Siding • Brown Trim & Roof

Base Price \$14,822.50 • With Options \$22,840.66



(P103) 24' x 32' x 10' – 768 Sq. Ft.

- 2 – 10' x 9' Insulated Garage Doors
- 1 – 36" 9-Lite Entry Door
- 12" Eave & Gable Overhangs
- 4 – 36"x40" Windows with Shutters
- 36" Cupola
- Snow Guards
- 4" Cement Floor with Apron
- Brown Siding • White Trim • Tan Roof

Base Price \$13,530 • With Options \$23,945.51

(P104) 30' x 32' x 10' – 960 Sq. Ft.

- 2 – 9' x 9' Garage Doors
- 1 – 36" 9-Lite Entry Door (Inswing)
- 2 – 36" x 40" Windows
- 36" Wainscoting
- 12" Eave & Gable Overhangs
- 4" Cement Floor
- Light Stone Siding • Green Trim & Roof

Base Price \$14,822.50 • With Options \$25,075.50



2-3-4 Car Garages



(P105) 30' x 32' x 9' – 960 Sq. Ft.

- 1 – 36" 9-Lite Entry Door (Inswing)
- 12" Eave & Gable Overhangs
- 2 – 36" x 40" Windows
- 36" Wainscoting
- 36" Cupola
- 4" Cement Floor
- Ash Gray Siding
- Charcoal Trim & Roof

Base Price \$14,685 • With Options \$21,377.10

(P106) 30' x 50' x 10' – 1,500 Sq. Ft.

- 4 – 9' x 9' Insulated Carriage Style Doors
- 1 – 36" 9-Lite Entry Door
- 3 – 36" x 40" Windows
- 12" Eave & Gable Overhangs
- 36" Wainscoting
- 36" Cupola
- Seamless Rain Gutters & Snow Guards
- Ash Grey Siding
- Pewter Gray Trim & Roof

Base Price \$19,745 • With Options \$34,368.10



(P107) 36' x 48' x 10' – 1,728 Sq. Ft.

- 3 – 9' x 9' Garage Doors with Windows
- 2 – 36" 9-Lite Entry Door (Clay)
- 12" Eave & Gable Overhangs
- Fully Insulated with Metal Finished Interior
- 4" Cement Floor
- Red Siding
- Brown Trim
- Brown Roof

Base Price \$20,735 • With Options \$48,595.22



(P108) 24' x 36' x 10' – 864 Sq. Ft.

- 3 – 9' x 8' Carriage Style Garage Doors
- 1 – 36" Solid Entry Door
- 12" Eave & Gable Overhangs
- Perma Columns
- Snow Guards
- Bronze Siding
- White Trim & Black Roof

Base Price \$13,970,900 • With Options \$24,958.14



Garages with Porches



(P109) 24' x 24' x 8' – 576 Sq. Ft.

- 2 – 9' x 7' Garage Doors
- 1 – 36" 9-Lite Entry Door
- 3 – 36" x 40" Windows
- 12" Eave & Gable Overhangs
- Vinyl Siding & Shingled Roof
- 8' x 24' Porch with Soffit & Vinyl Post Sleeves
- 4" Cement Floor
- Flint Siding • White Trim • Gray Shingles

Base Price \$11,137.50 • With Options \$28,581.74

(P110) 24' x 48' x 8' – 1,152 Sq. Ft.

- Half Garage & Half Pavilion
- 2 – 9' x 7' Clay Garage Doors
- 12" Eave & Gable Overhangs
- 4" Cement Floor
- Clay Siding
- Clay Trim
- Brown Roof

Base Price \$16,940 • With Options \$24,176.80



(P111) 36' x 50' x 12' – 1,800 Sq. Ft.

- 1 – 9' x 8', 2 – 10' x 11' Clay Garage Doors
- 1 – 36" 9-Lite Entry Door (Painted)
- 6 – 36" x 40" Clay Windows
- 12" Eave & Gable overhangs
- 42" Wainscoting
- Seamless Rain Gutters with Snow guard
- 2 – 36" Cupolas with Weather Vanes
- 8' x 16' Porch with Soffit & Vinyl Post Sleeves
- Beige Siding • Clay Trim & Roof

Base Price \$24,832.50 • With Options \$43,261.04

(P112) 30' x 32' x 10' – 960 Sq. Ft.

- 2 – 9' x 8' Clay Garage Doors with Windows
- 1 – 36" 9-Lite Entry Door (Inswing)
- 4 – 30" x 40" Clay Windows
- 12" Gable overhangs
- 48" Front Eave overhang
- 36" Wainscoting
- Fully Insulated with Metal Finished Interior
- 6" Cement Floor & 4' x 32' Apron
- Beige Siding • Clay Trim & Roof

Base Price \$14,822.50 • With Options \$36,465.66



Two Story Garages



(P113) 24' x 40' x 10' – 960 Sq. Ft.

- 1 – 9' x 7' 2 – 9'x8' Garage Doors
- 1 – 36" 9-Lite Entry Door (Inswing)
- 4 – 24" x 36" Windows with Shutters
- 12" Eave and Gable Overhangs
- Gambrel Attic Trusses with Stairs
- Vinyl Siding and Shingled Roof
- Seamless Rain Gutters
- 4" Cement Floor and 8' x 40' Apron
- Clay Siding • White Trim • Gray Shingles

Base Price \$14,960 • With Options \$51,709.26

(P114) 28' x 40' x 10' – 1,120 Sq. Ft.

- 3 – 9'x8', Clay Carriage-Style Garage Doors
- 1 – 36" 9-Lite Entry Door (Inswing)
- 6 – 24" x 36" Windows
- 12" Eave and Gable Overhangs
- Gambrel Attic Trusses w/Stairs
- Seamless Rain Gutters
- 4" Cement Floor
- Red Siding • Clay Trim • Clay Roof

Base Price \$14,250.50 • With Options \$45,916.64



(P115) 26' x 32' x 9' – 832 Sq. Ft.

- 2 – 9' x 8', Carriage-Style Garage Doors
- 1 – 36" 9-Lite Entry Door
- 8/12 Pitch Attic Trusses w/Stairs
- 36" Stone Veneer Wainscoting
- 24" Front Eave Overhang
- 36" Cupola with Weather Vane
- Seamless Rain Gutters and Snow Guards
- 4" Cement Floor
- Ash Gray Siding • White Trim • Charcoal Roof

Base Price \$12,842.50 • With Options \$34,724.70



(P116) 24' x 24' x 10' – 576 Sq. Ft.

- 2 – 9' x 7' Carriage Style Garage Doors
- 1 – 36" 9-Lite Entry Door (Inswing)
- 4 – 24" x 36" Windows w/Shutters
- 12" Eave & Gable Overhangs
- Vinyl Siding
- 7/12 Pitch Attic Trusses w/Stairs
- Stick Built on 6" Cement Slab
- White Siding • White Trim • Colonial Red Roof

Base Price \$12,402.50 • With Options \$25,037.34



Two Story Garages



(P117) 30' x 36' x 10' – 1,080 Sq. Ft.

- 3 – 9' x 8' Carriage Style Garage Doors
- 1 – 36" 9-Lite Entry Door (Inswing)
- 12" Eave & Gable Overhangs
- 36" Wainscoting
- 8/12 Pitch Attic Trusses with Stairs
- 36" Cupola with 30" Weather Vane
- Seamless Rain Gutters with Snow Guards
- White Siding • Black Trim • Black Roof

Base Price \$15,235, with options \$36,163.70

(P118) 36' x 48' x 10' – 1,728 Sq. Ft.

- 3 – 10' x 8' Garage Doors with Windows
- 1 – 36" 9-Lite Entry Door
- 12" Eave & Gable Overhangs
- Vinyl Siding & Shingled Roof
- 6' x 8' Porch with Stone Veneer
- 10/12 Pitch Attic Trusses with Stairs
- 3 – 4' Dormers with 24" x 40" Windows
- Seamless Rain Gutters • 4" Cement Floor
- White Siding • White Trim • Black Shingles

Base Price \$20,735 • With Options \$65,578.88



(P119) 36' x 56' x 12' – 1,872 Sq. Ft.

- 2 – 10' x 10' insulated Garage Doors
- 1 – 36" 9-Lite Entry Door
- 4 – 36" x 40" Windows
- 12" Eave & Gable Overhangs
- 6/12 Pitch Attic Trusses with Stairs
- 4" Cement Floor
- Light Stone Siding • Brown Trim • Brown Roof

Base Price \$27,802.50 • With Options \$58,134.54

(P120) 36' x 28' x 10' – 1,008 Sq. Ft.

- 3 – 10' x 8' Custom Garage Doors
- 1 – 36" 9-Lite Entry Door
- 4 – 36" x 40" Windows
- 12" Eave & Gable Overhangs
- Vinyl Siding
- 7/12 Pitch Attic Trusses with Stairs
- 22" Round Gable Vents
- Seamless Rain Gutters & Snow Guards
- Clay Siding • White Trim • Charcoal Roof

Base Price \$15,950 • With Options \$41,238.94



Agricultural Buildings



(P121) 40' x 60' x 14' – 2,400 Sq. Ft.

- 1 – 9-Lite Entry Door
- 1 – 20' x 14' Split Sliding Doors
- 24" Clear Side Lights
- Red Siding • White Trim & Roof

Base Price \$31,598.50 • With Options \$35,586.50

(P122) 36' x 48' x 12' – 1,728 Sq. Ft.

- 1 – 12' x 12' Split Sliding Door
 - 1 – 10' x 10' Single Sliding Door
 - 1 – 9-Lite Entry Door
 - 3' Wainscoting All Around
 - 12" Eave & Gable Overhangs
 - Light Stone Siding • Burgundy Trim & Roof
- Base Price \$23,980 • With Options \$28,530



(P123) 24' x 60' x 10' – 1,440 Sq. Ft.

- 1 – 12' x 10' Split Sliding Door
- 1 – 9-Lite Entry Door
- 5 – 36" x 36" Horizontal Slider Windows
- 12" Eaves & Gable Overhangs
- 36" Wainscoting
- 2 – 36" Cupola with Weather Vanes
- 6" Cement Floor
- Beige Siding • Blue Trim & Roof

Base Price \$22,440 • With Options \$34,564.60

(P124) 48' x 80' x 16' – 3,840 Sq. Ft.

- 2 – 10' x 8', 2 – 16' x 14' Garage Doors with Windows
- 2 – 36" 9-Lite Entry Doors
- 12 – 36" x 40" Windows
- 32' x 8' Reversed Gable
- 2 – 24' x 8' Porches
- 12" Eave & Gable Overhangs
- 36" Wainscoting
- Seamless Rain Gutters & Snow Guards
- Scissor Trusses
- Light Stone Siding • Evergreen Trim & Roof

Base Price \$49,665 • With Options \$125,000 Approx.



Agricultural Buildings



(P125) 50' x 100' x 14' – 5,000 Sq. Ft.

- 1 – 12' x 13' Garage Door
- 2 – 10' x 12' Garage Doors
- 1 – 9-Lite Entry Door
- 12" Eave & Gable Overhangs
- Pewter Grey Siding • Red Trim & Roof

Base Price \$54,890 • With Options \$64,980

(P126) 40' x 32' x 10' – 1,280 Sq. Ft.

- 2 – 10' x 9' Garage Doors
- 1 – 9-Lite Entry Door (Inswing)
- 5 – 36" x 36" Slider Windows
- 12" Eave & Flush Gables
- Brown Siding • Brown Trim • Tan Roof

Base Price \$17,677.50 • With Options \$23,209.94



(P127) 40'x80'x12' – 3,200 Sq. Ft.

- 3 -14'x10' insulated Garage Doors
- 1 - 6' Full Light Double Doors
- 12" Eave & Gable Overhangs
- 24" Soft White Side Lights
- Gallery Blue Siding & White Trim & Ash Grey Roof

Base Price \$36,685 • With Options \$50,789

(P128) 40' x 48' x 16' – 3,200 Sq. Ft.

- 2 – 10' x 10' Carriage Style Garage Doors
- 1 – 36" 9-Lite Entry Door
- 4 – 36" x 40" Windows
- 12" Eave & Gable Overhangs
- 12' x 48' Porch with Soffit & Vinyl Post Sleeves
- Perma Columns
- 6' Cement Floor with Wire Mesh
- Floor Drain
- Red Siding • White Trim & Roof

Base Price \$28,745 • With Options \$73,962.30



"Love is patient, love is kind, it is not self-seeking, it is not easily angered." – 1 Corinthians 13:4

Commercial Buildings



(P129) 66' x 88' x 16' – 5,805 Sq. Ft.

- 3 – 14' x 14' Garage Doors with Windows
- 1 – 10' x 10' Garage Door
- 1 – 9-Lite Entry Door
- 12 Eave & Gable Overhangs
- 42" Wainscoting
- 6" Cement Floor
- Light Stone Siding • Evergreen Trim • Ash Grey Roof

Base Price \$72,500 • With Options \$119,564.24

(P130) 80' x 100' x 20' – 8,000 Sq. Ft.

- 3 – 14' x 14' Garage Doors
- 1 – Double 15-Lite & 1 – 9-Lite Entry Door
- 17 – 72" x 48" Single Hung Windows
- 48" Wainscoting
- 10' x 28' Porch with Soffit & Vinyl Post Sleeves
- Seamless Rain Gutters & Snow Guards
- 6" Cement Floor
- Tan Siding • Forest Green Trim & Roof

Base Price \$118,800 • With Options \$186,084.64



(P131) 40' x 60' x 10' – 2,400 Sq. Ft.

- 1 – Double 9-Lite Entry Door
- 2 – Windows with Shutters
- 8' x 40" Porch with Soffit & Vinyl Post Sleeves
- 2' x 40' Pent Roof
- Fully Insulated & Metal Finished Interior
- 6" Cement Floor
- Red Siding • White Trim & Roof

Base Price \$25,107.50 • With Options \$63,800.50

(P132) 40' x 150' x 10' – 6,000 Sq. Ft.

- 34 – 10' x 15' Bays
- 34 – 9' x 9' Garage Doors
- 24" Overhangs on Four Sides
- Perma-Columns
- 3 Cupolas
- Seamless Rain Gutters & Snow Guards
- 4" Cement Floor
- Beige Sides & Trim • Copper Roof

Base Price \$62,920 • With Options \$204,000 Approx.

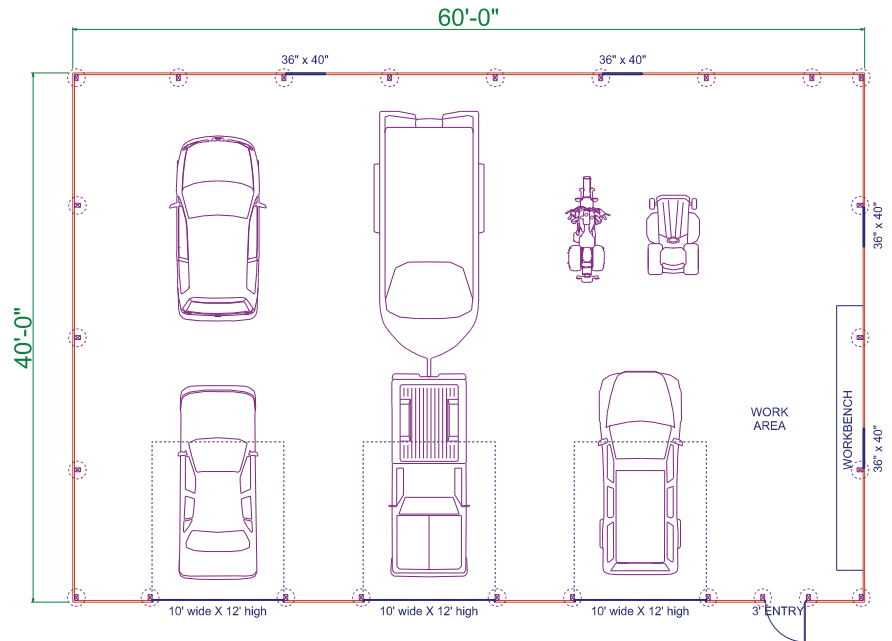
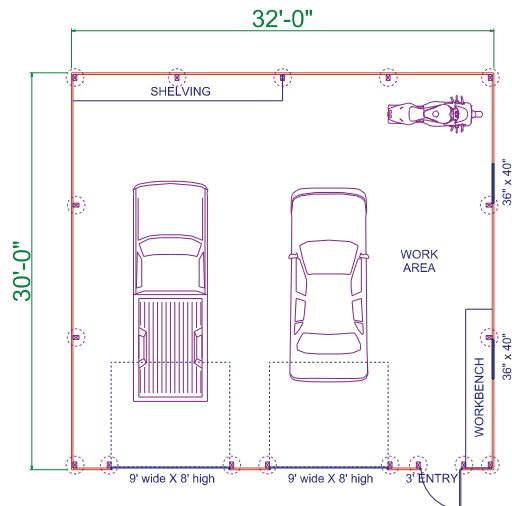
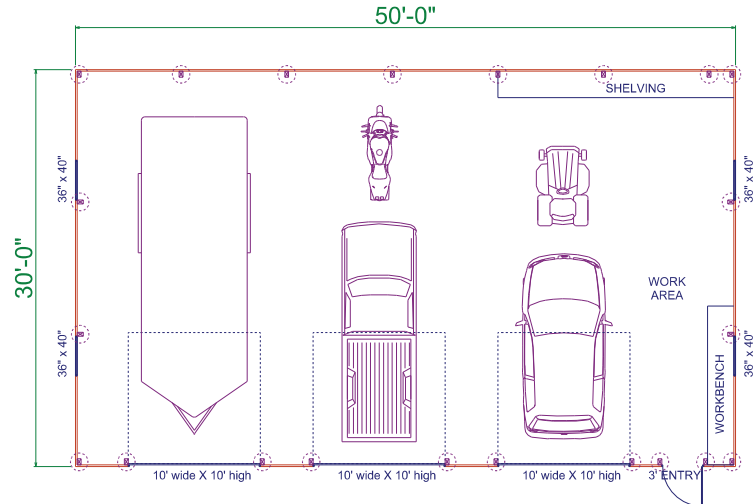
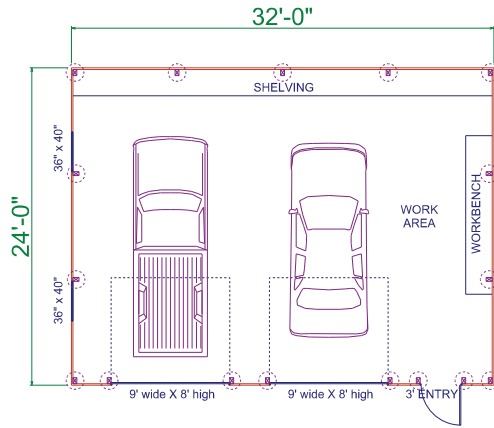


34 Unit Storage Rental Facility. A GREAT Opportunity for a High Return on Investment, If you have an Acre of Commercial Land.

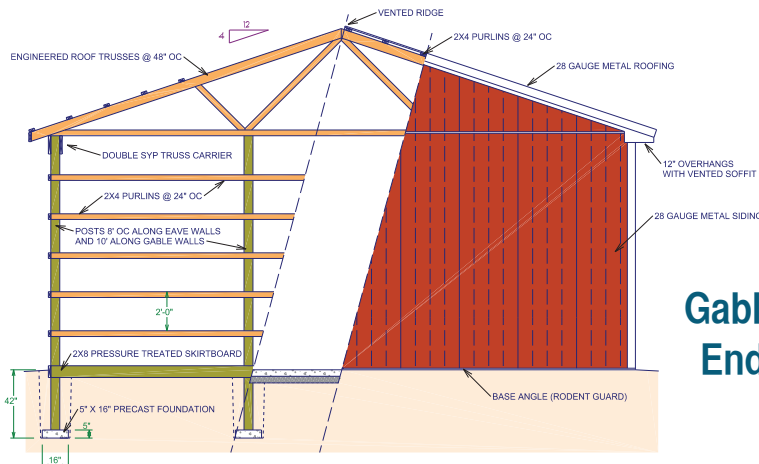
Floor Plans

When you Build ... Bigger is Better!

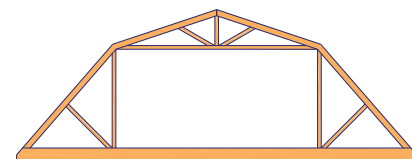
Most folks underestimate future storage needs. Take a look at some of our Floor Plans to help you get an idea what size building you may need.



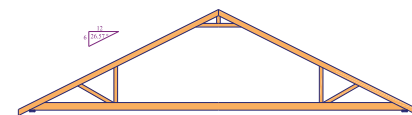
**Architectural Drawings
are Fast, Easy &
Printed In-House!**



**Gable
End**



Gambrel Attic Truss



6 Pitch Attic Truss

Our Blue Prints & Insurance Certificates help Make Your Building Permit Process a Breeze!

Color Choices

See our Color Visualizer under Pole Buildings at www.rockymtnsheds.com

ABM Panel

28 Gauge Galvanized or Galvalume

Dot (•) identifies colors also available in 26 Gauge Galvalume



Bright White (WH)



Light Stone (LS)



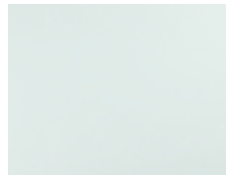
Beige (BG)



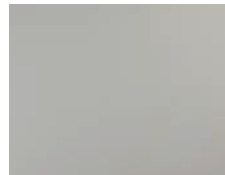
Clay (CL)



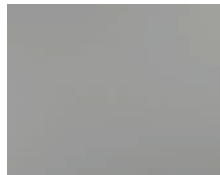
Tan (TN)



Bone White (BW)



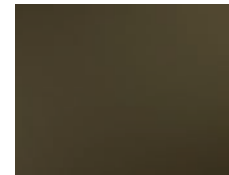
Ash Gray (AG)



Pewter Gray (PG)



Charcoal (CH)



Bronze (BZ)



Scarlet Red (SR)



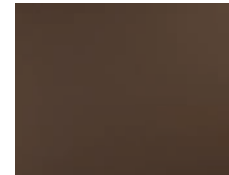
Barn Red (RD)



Colonial Red (CR)



Burgundy (BU)



Brown (BN)



***Gold** (GL)



***Patina Green** (PA)



***Avocado Green** (AV)



Forest Green (FG)



Evergreen (EG)



Slate Blue (SB)



Gallery Blue (GB)



***Dark Blue** (DB)



Black (BL)

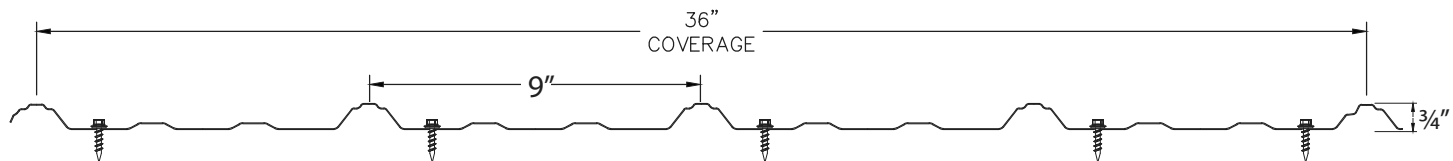


***Copper Penny** (CP)

36" Wide Coverage • 9" Rib Spacing • 3/4" High Rib

ABM Panel Profile (Acc)

***Only available with Galvalume Panels.**
***Premium Color at Additional Cost.**

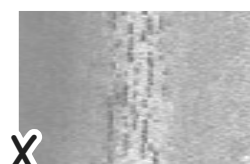


There's good reason why we've been Heat Forming for more than a decade!

The details matter... even if you need a microscope to see them. We heat-form the ABM Panel to prevent microscopic cracking of the rust-preventing paint coating as the panel is formed. Heating the panel before bending temporarily softens the paint which allows it to flex as the panel is formed and shaped.



✓ Heat-formed Panel



✗ Cold-formed Panel

We strive to make our color charts as precise as possible, but the accuracy of the painted chips is not guaranteed. For 100% color matching, please request a free metal sample.

Pole/Posts Standards

Standard Post Spacing is 8 ft.

Set on Precast Footers 42" Below Ground Level for Optimum Frost Uplift Protection

Solid Sawn Posts



Standard on Buildings with 8', 10', 12' Walls

Solid sawn posts are just as their name suggests. Our 4' x 6' posts are sawn from solid wood and treated with .60 (ground contact) treatment.



GluLam Posts

Standard on Buildings with 14' or Higher Walls

Glued-laminated timber, or GluLam, is a timber product manufactured from dimensional lumber, called laminating stock. This laminating stock comes in 2" nominal thickness and varying widths. The lamstock is finger-jointed together end to end, then glued together in laminations using waterproof, state of the art adhesives, creating a high strength-to-weight ratio. They are known for their strength, straightness, and resistance to twisting and warping. That means they are great for taller buildings, or cases involving high wind and/or snow loads.

The bottom 6' are treated for ground contact. 3-Ply 2' x 6' GluLam Posts are our standard. 4 or 5 ply posts are used on largest commercial buildings based on building code regulation.

Eliminate In-Ground Post Decay and Rot

The Green Post

Option #1 – Our Most Popular Upgrade
\$40 per post upcharge



The most affordable in-ground solution to post decay, the Green Post provides superior protection from the harmful effects of concrete, microorganisms, corrosive soils agents, soil nutrients, moisture, and oxygen that can cause rot and post failure.

Four features give the The Green Post it's strength: 1) the bottom 6 ft or the entire post is treated for ground contact, 2) the bottom of the post is notched to maximize uplift restraint, 3) the post is coated with a protective layer of bituminous coating that has been used in resisting rot for over a thousand years, and 4) the chemical treatment and bituminous coating are sealed around the post with a polyethylene membrane that protects the soil and the post.

Factory-applied heat-shrunk double layer Polyethylene wrap with uplift restraint notches

Perma Column

Option #2 – A Less-Expensive Choice
Compared to a Block Foundation
\$175 per post upcharge



Perma-Columns are GluLam posts attached to five-foot precast concrete columns that keep wood out of the ground, ensuring your building's foundation will never rot. They are the first product to combine the economy of pole building construction with the durability of a concrete foundation. Simple installation with no waiting on concrete trucks. No treated wood in the ground. No more rot problems!

Base Prices

24' x 24' x 8'\$11,137.50	30' x 50' x 12' ...\$21,312.50	40' x 60' x 10' ...\$25,107.50
24' x 32' x 10'\$13,530	30' x 60' x 16'\$32,470	40' x 60' x 12'\$28,930
24' x 40' x 10'\$14,960	32' x 48' x 10' ...\$19,607.50	40' x 60' x 14' ...\$31,597.50
30' x 32' x 10' ...\$14,822.50	32' x 60' x 12' ...\$25,382.50	40' x 60' x 16'\$33,440
30' x 40' x 10' ...\$15,812.50	36' x 48' x 12'\$23,980	50' x 100' x 16'\$58,960
30' x 48' x 10'\$18,755	36' x 60' x 16' ...\$31,047.50	60' x 120' x 14' . \$79,007.50

Prices Include:

- 1 – 9' x 7' Garage Door
- 36" 9-Lite Entry Door
- 12" Vented Eaves
- Vented Ridge
- 28 Gauge Metal Roofing & Siding
- Tax Included
- Installation & Trash Removal within 70 miles of Lykens PA.

Interior Options:



Metal Finished Interior



Attic Storage



Double Bubble (Condensation Barrier)
A Popular Roof Option. Also a Great Idea on the Walls.



16' High walls allow 2nd Floor Options

Pole Building Options

Windows

- 36" x 40" Vertical Single Hung with Grids 275 ea.
Our windows come insulated with screens

Overhead Doors

High-Quality CHI Doors with Torsion Springs

	Non-Insulated	Vinyl-Backed R 7.9 Insulated	Steel-Backed R 9.6 Insulated
• 9'x7'	1043.02 ea.	1315.90	1587.28
• 9'x8'	1262 ea.	1562.68	2042.04
• 9'x9' & 10'x9'	1818.18 ea.	2303.72	2962.54
• 10'x10' & 10'x12'	2282.38 ea.	2852.98	
• 12'x12' & 16'x8'	2532.04 ea.	3173.28	
• 12'x14' & 14'x14'	3889.64 ea.	4878.68	6255.40
• 675 credit to change from a 9'x7' to a larger door.			
• 45° Dutch Corners		110 per door	
• 1 Row of Windows in Overhead Door		220	
• Carriage Style Door Upgrade (Includes 1 Row of Windows)		436.70	
• Please specify door color: White, Brown, Clay, Almond			
• Sliding Door, any Size Available	\$11 sq. ft.	\$1265 min.	
• Double Sliding Door, any Size	\$14.30 sq. ft.	\$1540 min.	
(All Sliding Doors are Constructed with 20 Gauge Steel Framing)			

Entry Doors: Fiberglass

- 36" 9-Lite or Solid Outswing Door 379.50 ea.
- 72" Double 9-Lite or Solid Outswing Doors 1045 ea.
- Inswing (Includes Vinyl Jamb) add 192.50
- Deadbolt add 82.50
- Painted to Match Garage Doors add 220

Siding

- Wainscoting (two-tone sides) 6.60 lin.ft.
- Eave Side Lights (white or clear) 13.20 sq.ft.
- Lifetime Warranty Vinyl Siding 3.30 sq.ft.
- Tyvek under Vinyl Siding .55 sq.ft.
- Shutters 66 per set

Cupolas

- 24" Louvered Style 632.50 Windows 825
 - 36" Louvered Style 907.50 Windows 1182.50
 - 48" Louvered Style 1402.50 Windows 1815
 - 30" Weather Vanes 126.50
- (Rooster, Eagle, Horse, etc. – More Options Available)

Finished Interiors

- Metal Ceiling with R-30 Cellulose 4.29 sq.ft.
- White Poly Interior Lining with R-19 Fiberglass 5.50 sq.ft.
- Metal Interior Lining with R-19 Fiberglass 3.58 sq.ft.
- Trim Out Windows and Entry Doors w/White Poly 93.50 ea.
- Cut Around Electrical Outlets & Lights 11.00 ea.
- Ceiling Access Door 2'x4' Insulated 302.50 ea.

Roofs - 12" Vented Eave Overhangs Included

- 12" Vented Gable Overhangs 17.60 lin.ft.
- Extend Overhangs from 12" to 24" 22.00 lin.ft.
- 6/12 Pitch Attic Trusses, 35 PSF Storage Loading 5.23 sq.ft.
- 7/12 Pitch Attic Trusses, 35 PSF Storage Loading 5.50 sq.ft.
- 8/12 Pitch Attic Trusses, 35 PSF Storage Loading 6.33 sq.ft.
- Gambrel Attic Trusses, 35 PSF Storage Loading 13.20 sq.ft.
- 3/4 T&G OSB Attic Flooring with 1/2" OSB on sides 6.33 sq.ft.
- 36" Stairs with Railing 632.50
- 36" L-Stairs with Railing 880
- Lifetime Warranty Shingled Roof 3.30 sq.ft.
(Includes Truss Spacing 24" OC & 15 lb. Felt Paper)
- Skylight (White or Clear Panel) 6.60 sq.ft.
- 5" Seamless Gutters and Downspouts 8.25 lin.ft.
- Stainless Snow Guards (protects your gutters) 7.15 ea.
- Leaf Guards for Rain Gutters 4.68 lin.ft.
- R-7 Double Bubble Insulation (Condensation Barrier) 1.38 sq.ft.
- ZXL 40-Year Warranty Screws .33 sq.ft.

Posts

- 3-Ply 2'x6' Glu-lam Posts for Walls under 12' High 35 / post
- Green Posts (Heat Shrink Rubber Coated) 55 / post
- Perma columns (Concrete Post in the Ground) 203.50 / post

Floors

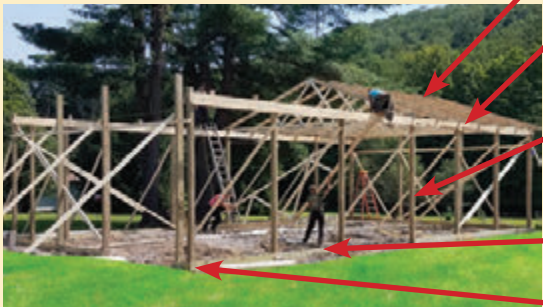
- 4" Cement Floor 4000 psi 3.85 sq.ft.
- 5" Cement Floor 4000 psi 4.13 sq.ft.
- 6" Cement Floor 4000 psi 4.68 sq.ft.
- Cement Floor Under 1000 sq. ft. add .28 sq.ft.
- Apron 4" Cement (minimum charge is \$1320) 6.60 sq.ft.
- 6 mil Plastic (Vapor Barrier) .35 sq.ft.
- Fiber in Cement .39 sq.ft.
- Wire Mesh .72 sq.ft.
- 6" Round Floor Drain with 2" Pipe to the Outside 357.50
- 4"x48" Trench Drain 467.50



High Quality Construction Standards

10 YEAR
Top to Bottom
Warranty

The Best in the Industry



- ✓ Engineered Trusses at 48" Spacing.
- ✓ #1 Yellow Pine Double-Ply Headers—The Strongest Wood Available.
- ✓ .60 Treated 4" x 6" Post up to 12' walls, 3-Ply 2' x 6' GluLam Post 14' and Higher Walls.
- ✓ .60 Treated 2" x 8" Skirtboard.
- ✓ Extra Strength Precast Footers set at 42" below Ground Level
- ✓ 28 - GA. G-100 Metal Roofing and Siding Heat-Formed with a 40 year Warranty.
- ✓ Kiln Dried 2" x 4" Roof & Side Purlins at 24" spacing.
- ✓ Never-Rust Fiberglass 9-Lite Entry Door Insulated with Grids Between the Glass.
- ✓ 12" Vented Eaves & Vented Ridge—No Upcharge
- ✓ High Quality CHI Garage Doors, Lifetime Warranty Against Rust.

All Our Buildings are Designed & Built to Meet or Exceed State & Local Building Codes for Wind & Snow Loads



Rocky Mountain
• STRUCTURES LLC •

www.rockymtnsheds.com